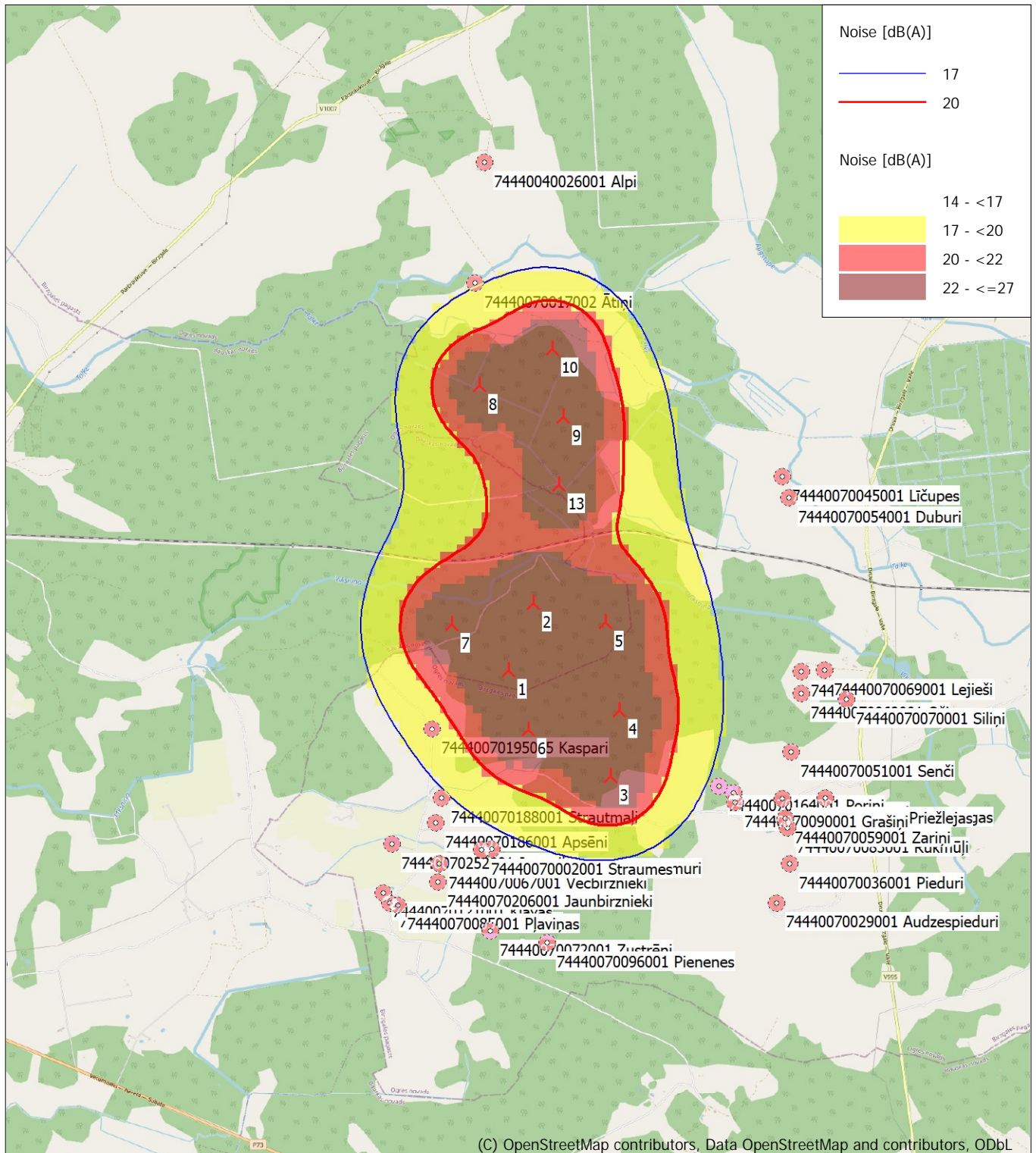


DECIBEL - Map 6.0 m/s Regular dwellings

Calculation: Nordex N175 - 6.8 MW STE



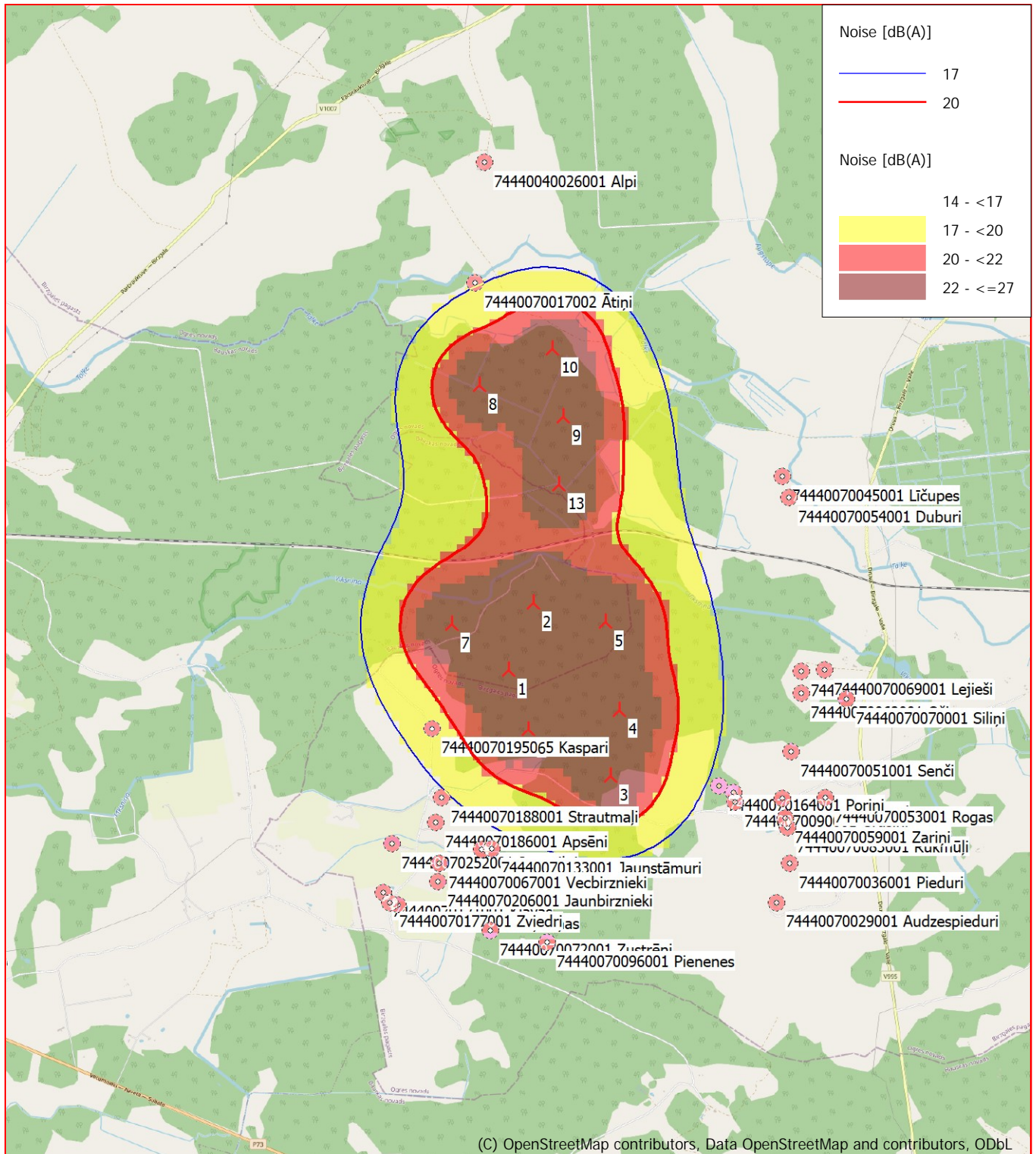
0 500 1000 1500 2000 m

Map: EMD OpenStreetMap, Print scale 1:50,000, Map center Geo WGS84 East: 24.687266° E North: 56.582618° N
 New WTG Noise sensitive area
 Noise calculation model: Danish low frequency 2019. Wind speed: 6.0 m/s Regular dwellings
 Height above sea level from active line object

Nordex N175-6.8 MW

04/04/2025 5:07 pm/4.0.547


Calculation: Nordex N175 - 6.8 MW STE



0 500 1000 1500 2000 m

Map: FMD OpenStreetMap. Print scale 1:50 000. Map center Geo WGS84. East: 24 687266° E. North: 56 582618° N.

 New WTG

 Noise sensitive area

Noise calculation model: Danish low frequency 2019. Wind speed: 8.0 m/s Regular dwellings

Height above sea level from active line object